

**BUILD IT  
YOUR WAY**  
EXPLORE OUR  
TABLE TOP OPTIONS



## ROYCE RECTANGULAR DINING TABLE

Inspired by nature with both glam and an industrial vibe. The branch-like legs create a sculptural base, with a brushed finish that adds light-catching texture. Dining tables work with our Interchangeable dining tops and the side table's top matches it's base.

### MATERIAL

Metal

### DIMENSIONS

- A. 72"L x 40"W x 31"H
- B. 72"L x 42"W x 30"H
- C. 84"L x 42"W x 30"H
- D. 88"L x 40"W x 31"H
- E. 96"L x 42"W x 30"H
- F. 110"L x 40"W x 31"H

### TABLE TOP THICKNESS

- Faux Horn - 1"
- Stone - 1.5"
- Marble - 1.75"
- Metal - 1"

### LEG CLEARANCE

29"

### TABLE SEATS

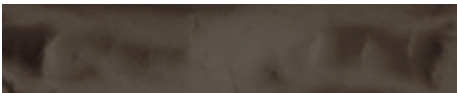
- A. 6
- B. 6
- C. 8
- D. 8
- E. 8
- F. 10

### MAX. TABLE TOP WEIGHT

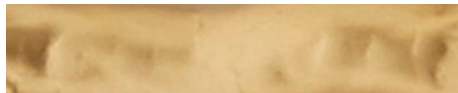
143 lbs

*This item is handcrafted and may show slight variation in size from one piece to another.*

### FINISHES



Dark Bronze



Warm Gold

